

SIMONSWERK

TECTUS®

TE 380 3D

for rebated residential doors

hinge

Technical details

load capacity	60,0 kg
overall length	190,0 mm
width (door)	20,0/28,5 mm
width (frame)	26,0 mm
cutter Ø	20,0 mm
opening angle	180° degree

descriptive text

SIMONSWERK TECTUS hinge TE 380 3D. Completely concealed for rebated doors with timber, steel and aluminium frames. With comfortable 3D adjustment, load capacity up to 60 kg, opening angle up to 180°, overall length 190 mm, right hand and left hand applicable, maintenance-free slide bearings, three-dimensionally adjustable: side +/- 3,0 mm, height +/- 3,0 mm, compression +/- 1,0 mm. Finish...

Note

The load capacity mentioned above refers to the use of 2 hinges per door leaf (1 x 2 m), for detailed information please look at the chapter "technical information".

Product features

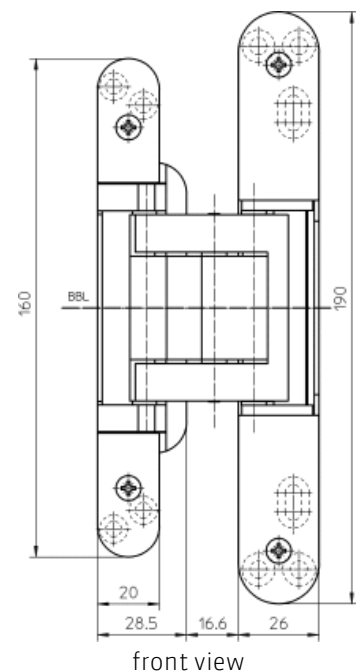
- completely concealed hinge system
- for timber, steel or aluminium frames
- for rebated residential doors
- maintenance-free slide bearings
- with comfortable 3D adjustment (side +/- 3,0 mm, height +/- 3,0 mm, compression +/- 1,0 mm)
- sideways closed hinge body for a homogeneous mortise appearance

Combination

receiver	TE 380 3D FZ/1 TE 380 3D SZ
----------	--------------------------------

installation tools

universal milling frame	
template 5 250955 5	frame, step 1
template 5 250956 5	frame, step 2
template 5 250957 5	frame, step 3
template 5 250958 5	door, step 1
template 5 250959 5	door, step 2



front view

SIMONSWERK

TECTUS®

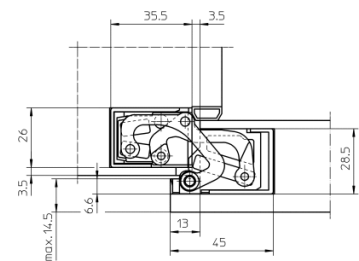
TE 380 3D

for rebated residential doors

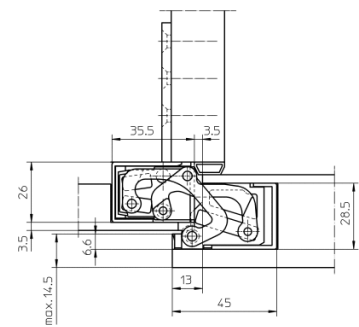
hinge

Items (DIN reference: DIN right and left hand)

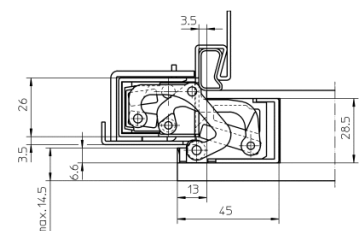
Finish(es)	matte white - RAL 9016 F
packing unit	pack of 2
item number	5 400640 0 05702
Finish(es)	powder-coated
packing unit	EUR-pallet
item number	5 400640 0 07975
Finish(es)	satin chrome look (F1)
packing unit	pack of 2
item number	5 400640 0 12402
Finish(es)	satin nickel look (F2)
packing unit	pack of 2
item number	5 400640 0 12502
Finish(es)	stainless steel look
packing unit	pack of 2
item number	5 400640 0 12602



block frame



casing frame



steel frame